



Dock House

Where Rococo Meets the 21st Century

The ultra-luxurious boutique Waterfront hotel, Dock House, has opened her doors to sophisticated travellers, sporting an interior set to rival the finest in the world.

Text: Manley Communications
Images: © Alain Proust

Located in the building that previously formed the grand residence and offices of the Harbour Engineer in the mid-1800s, Dock House is where 'Rococo meets the 21st Century.' The hotel showcases a masterful fusion of old and new, promising sophisticated contemporary living in Victorian architectural splendour.

Responsible for this dramatic transformation is Francois du Plessis - interior mastermind behind the Metropole Hotel, Salt restaurant in Bantry Bay and 'One on Waterfront' at the Cape Grace Hotel - together with Gabriel Fagan Architects.

Rich, opulent, dramatic and glamorous, every inch of Dock House is a veritable work of art. Created in a delicate monochromatic palette - with taupes, soft grey and white predominating - the hotel is a contemporary-classic masterpiece.

While the clean lines of present-day design have been put to good use, one can expect classical items - like linen and ornate antique furniture - to have been dressed in an edgy modern 'jacket' with metallic prints, up-to-the-minute colours and fabrics straight out of the 21st Century.

From floor to ceiling, Dock House is a statement of glamour and luxury. Artworks are contemporary, showcasing the creative works of local South African artists Johan Louw, Daryl McGregor, Garth Erasmus and the internationally renowned photographer, Kevin Mackintosh. Floor coverings offer a mix of plush carpeting, tiles, and restored wood. And, where possible, pressed ceilings and original cornices have remained, and now proudly boast antique chandeliers as well as more modern lighting solutions.

Upon entry in the lobby, generous volume combines with an oversized chandelier and Indian table complete with silver legs and marble top, to hint at the elegance of yesteryear, while a large contemporary mirror suggests the lavish modern-day conveniences that await.

A perfect space for easy breakfasts and small meetings is the Dock House morning room. Chairs are classic - upholstered in white leather with white wood trims. An expansive reproduction French dining table predominates, while smaller tables create intimacy. Made of shimmering linen, the drapes are elegant and sheer. Adding to the eclecticism is a contemporary server edged with silver

leafing that boasts ancient Chinese architectural pieces enshrined in glass boxes.

Dressed in luxurious fabrics like Chrysalis linen, velvet and silk, guest rooms are boudoirs of bliss. Comprising five en suite rooms and one expansive suite, each is individually decorated with freestanding furnishings offering a combination of old and new.

Expect havens where the latest in technology and contemporary furniture design combine seamlessly with ornate antiques, extravagant armoires, side tables and stylish easy chairs.

At Dock House, bathrooms are not mere utility spaces but have been designed for opulent living. Each one differs from the other, some are peaceful and calming and others, dramatic and theatrical. Some shower areas are clad in marble, while others are finished in striking black gloss.

As if all this is not enough, the allure of Dock House is further heightened by the offer of a plush 'gentlemen's' library with free access to a computer station. An outside entertainment arena complete with classic-style swimming pool, bar and alfresco dining area is also available, as is the spa and fitness centre - ONEwellness Dock House - which is located in the Dock House Annex.

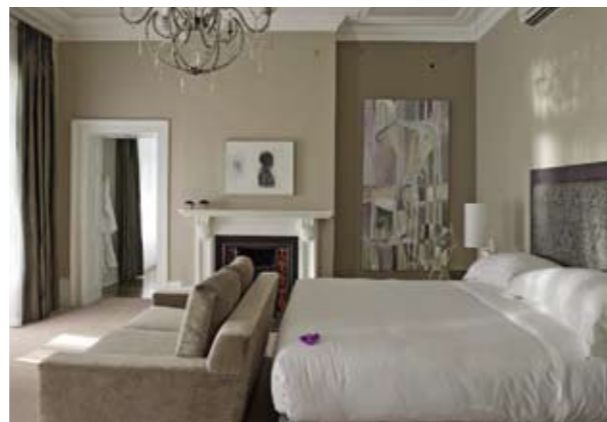
Uniquely fusing the worlds of fitness, beauty and spa, ONEwellness Dock House comprises three luxurious treatment rooms - one of which caters for dual treatments - as well as a Caldarium and the very latest in cutting-edge fitness technology, including a Kinesis Unit.

Committed to operating as a 'green' spa, leading international natural product range *Pevonia* has been selected to care for body and skin. The décor too reflects this concept inside the spa, with an interior that is natural and minimalistic, pleasing the senses with its organic shapes, bamboo finishes and earthy hues.

Here, guests may also enjoy an array of herbal teas and healthy options from the Dock House menu.

Combining a life of sophisticated luxury living with exclusivity, butler-style service, private check-in, cutting-edge technology, wellness and world-class entertainment, with Dock House, fine living has never been better!

For reservations and enquiries call +27 21 421 9334, email info@dockhouse.co.za or visit www.dockhouse.co.za.



CAPE POINT OSTRICH FARM

OPEN 9:30AM - 5:30PM

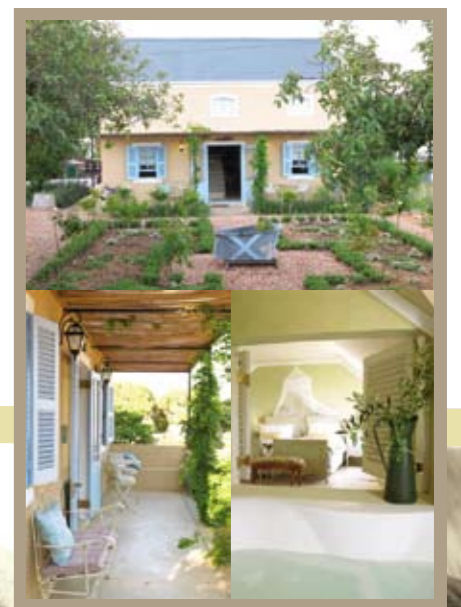


The Cape Point Ostrich Farm lies in the most beautiful part of the Cape Peninsula. 600m past the entrance to the Cape of Good Hope Nature Reserve on route M65, the Cape Point Ostrich Farm is easy to find.

Our farm team offers well-researched guided tours covering the life cycle of the ostrich and people taking tours are enabled to see the breeding station of our productive ostrich farm.

We pride ourselves on our exquisite variety of quality ostrich leather products. Handbags, belts, wallets, shoes and a wide variety of ostrich eggs.

Shades of Provence



Riebeek Kasteel is about 45 min. drive from Cape Town and is one of the little gems of the Western Cape. It reminds so much of the south of France and Tuscany: the same landscape, colours, Van Gogh wheat fields, olive groves and vineyards and the same gastronomic highlights. Shades of Provence in postcard pretty Riebeek Kasteel is a guest house with a difference. The rooms are decorated with fabrics bought in Provence. Our favourite pastime is a game of boules under the trees. Or you can relax in the jacuzzi or sauna. Or laze around the pool. Or enjoy one of our spa treatments like the hot stone at Oak Room Therapy. Children can sail their boats down the "outydse watervoor", try out the carousel horse or play with our scarecrow.

Contact Marieta at: shadesofprovence@kingsley.co.za or 021 91 34626 or 0845 11 1931